

Tone

Tone refers to the light and dark values used to render a realistic object, or to create an abstract composition. For example, when using pastel, an artist may often use a coloured paper support, using areas of pigment to define light and dark areas. The dark areas. Whereas, they leave the bare minimum for the mid tone.

When making a portrait (for example) dark tones are used to represent a moody or dark side to a personality. Tone can also be used to make the face look three-dimensional, for example darker tones around the chin, nose and eyes; lighter tones on forehead, nose and cheeks.

Contrast:

Contrast refers to the difference between tones.

A small amount of contrast, or low contrast, between the lightest and darkest tones will tend to result in a more subtle or calm image.

Tone in a drawing:

Tone can be used in drawings or paintings, conversely the simplest way to identify tone, is in a 3 dimensional cube, comparable to the one on the left. Tone can be used to; create a contrast of light and dark, to create the illusion of form, to create a dramatic or tranquil atmosphere or to create a sense of depth and distance.

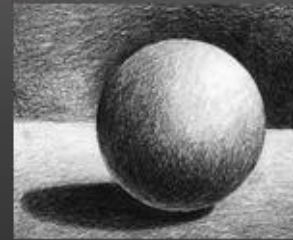
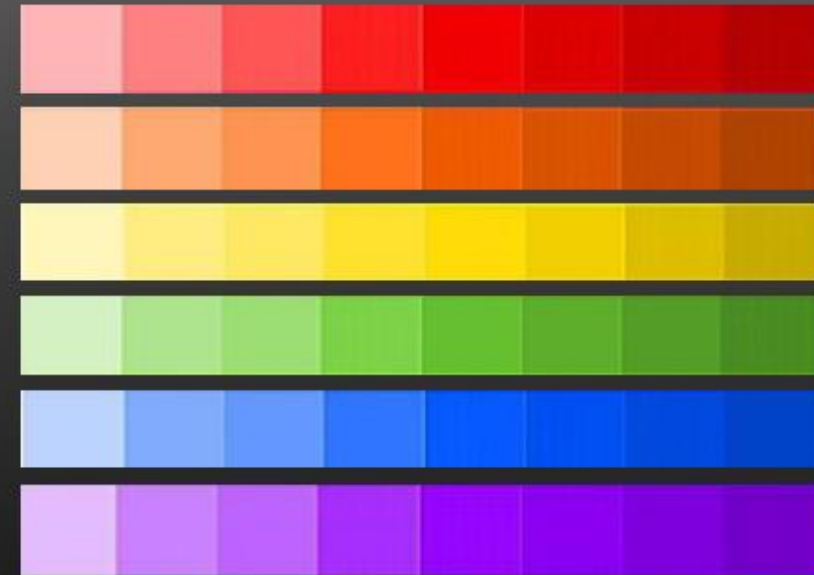
In this case, the tones are created by the way light falls on the object. The shadows and highlights give it dimension, even if it is one uniform colour in reality. The same can be made with colour, for example, using a darker tone of red can be identified as the dark tone on the example, in addition a lighter red can be used as a white or an exceptionally light tone. Furthermore, you can achieve tone in your art by using a range of materials, such as:

Shading, hatching and cross hatching. In this case, the tones are created by the way light falls on the object. The shadows and highlights give it dimension, even if it is one uniform colour in reality. Sometimes referred to as value, tone is one of the most powerful design elements, in any painting, photograph or design, the area of highest contrast between light and dark always demand maximum attention.

Tonal Ladder:

The easiest way to envision a variation in tone is to think of different shades of grey. Going from the deepest blacks to the brightest whites. You can vary intensity through each step as you move along the grayscale.

However, tone can also be incorporated through colour, with the deepest and brightest colours onto one side, into a lighter shade of that colour on the other. Every colour can have an endless variety of tones, nevertheless it can be harder to see that because the colour may distract us.



Different materials used for tone:

It is imperative to use the precise equipment when using tone in your art.

Some important equipment's are:

- Pen/pencil/chalk/paint
- paper
- Watercolour paper
- Rubber
- Colourless blender

Dark tone

Mid tone

Light tone

